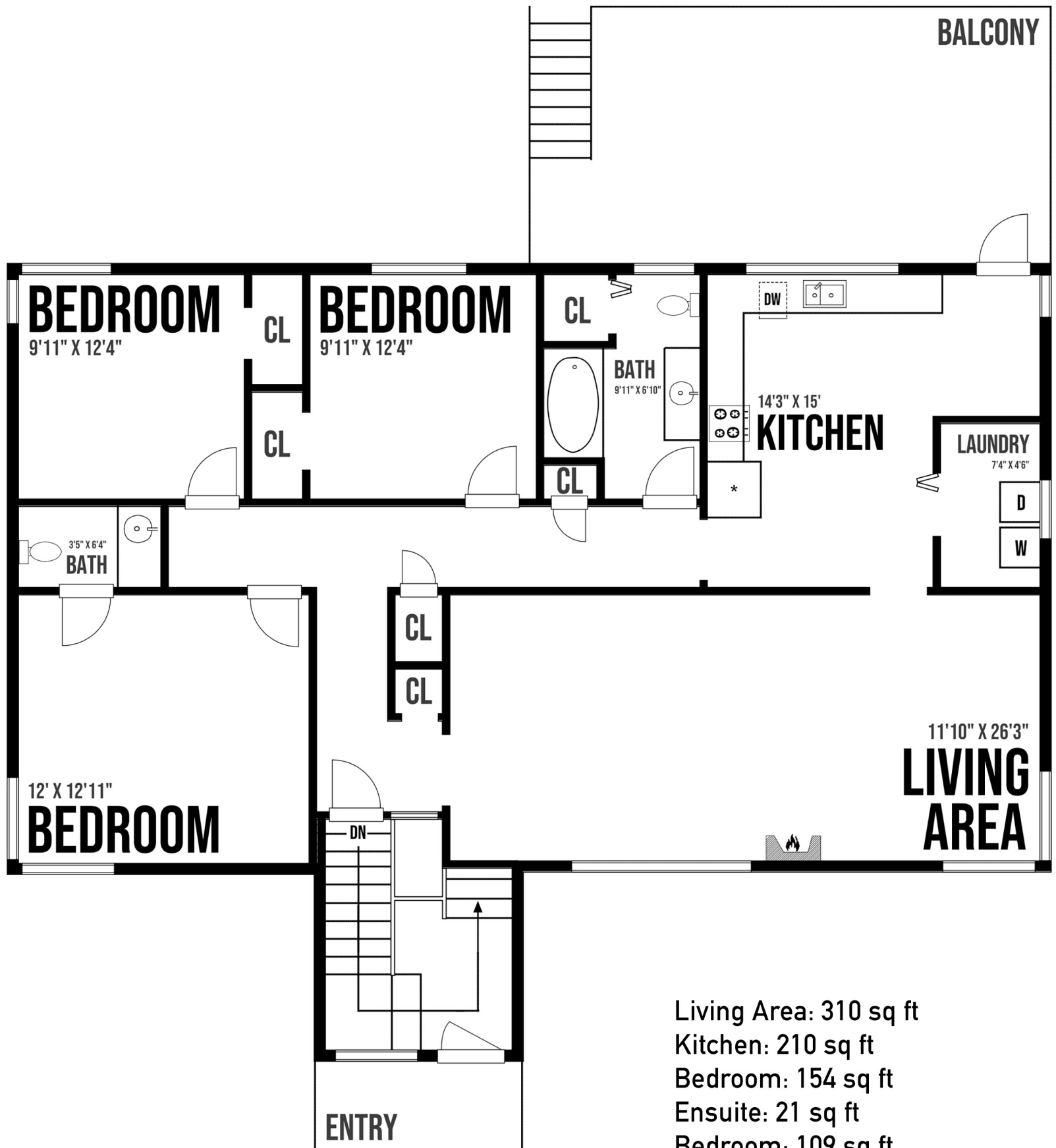


37236 Schooner Way - Upper Level



Living Area: 310 sq ft
 Kitchen: 210 sq ft
 Bedroom: 154 sq ft
 Ensuite: 21 sq ft
 Bedroom: 109 sq ft
 Bedroom: 109 sq ft
 Bathroom: 54 sq ft
 Deck: 252 sq ft
 Hallway: 124 sq ft

 Total sq ft: 1,091 sq ft

Prepared for the exclusive use of Sam Boyte and Dockside Realty Ltd.
 All measurements are approximate and Buyer to verify if important.



37236 Schooner Way - Lower Level



Living Area: 266 sq ft
 Kitchen: 134 sq ft
 Bedroom: 135 sq ft
 Ensuite: 21 sq ft
 Bedroom: 109 sq ft
 Bedroom: 75 sq ft
 Bathroom: 70 sq ft
 Hallway: 70 sq ft
 Total sq ft: 880 sq ft

Prepared for the exclusive use of Sam Boyte and Dockside Realty Ltd.
 All measurements are approximate and Buyer to verify if important.

