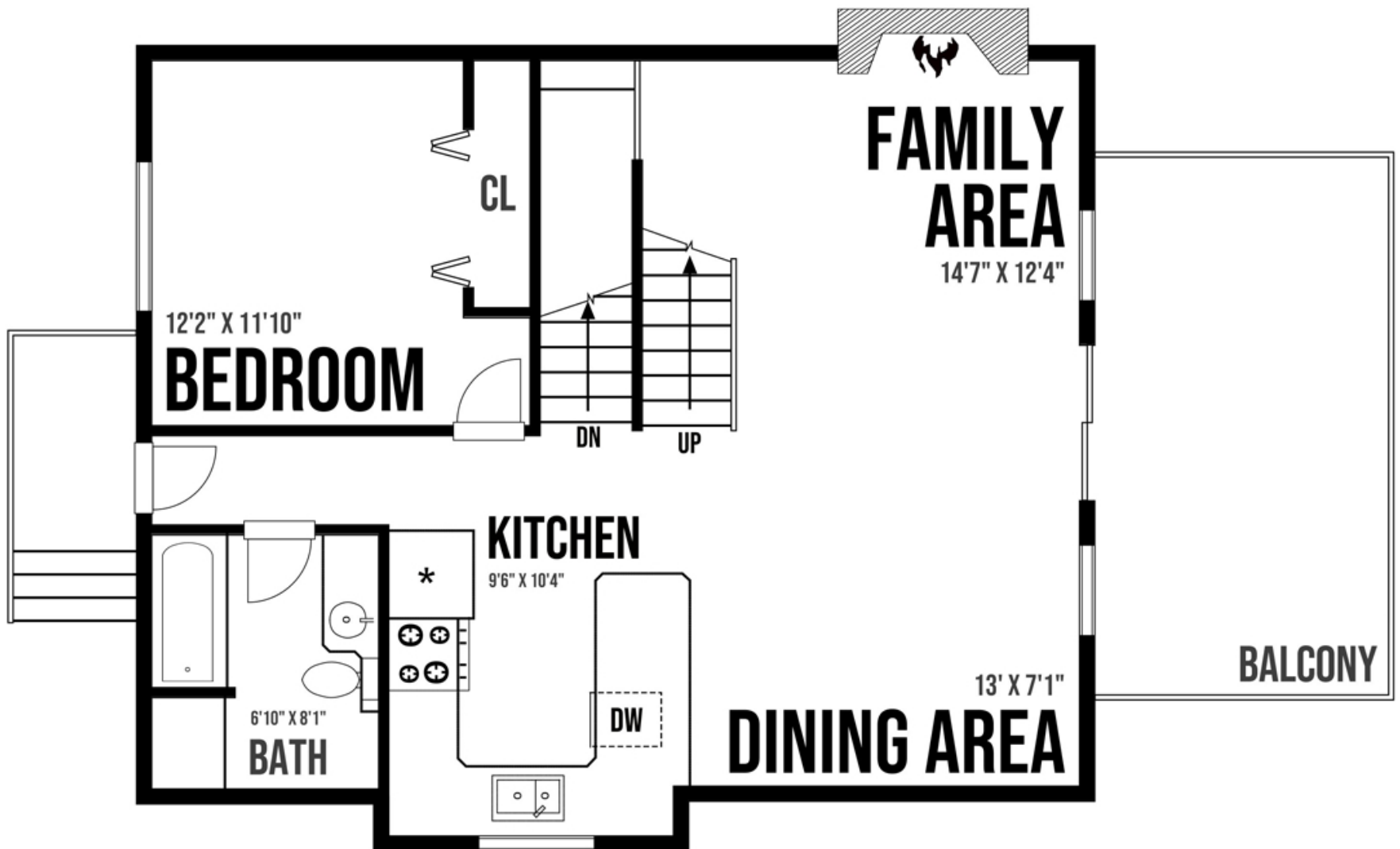


3728 Rum Rd. - Main Floor & Loft



Approximate internal sq ft:

Main level:

Family area: 280 sq ft

Dining area: 170 sq ft

Kitchen: 110 sq ft

Bedroom: 140 sq ft

Bathroom: 60 sq ft

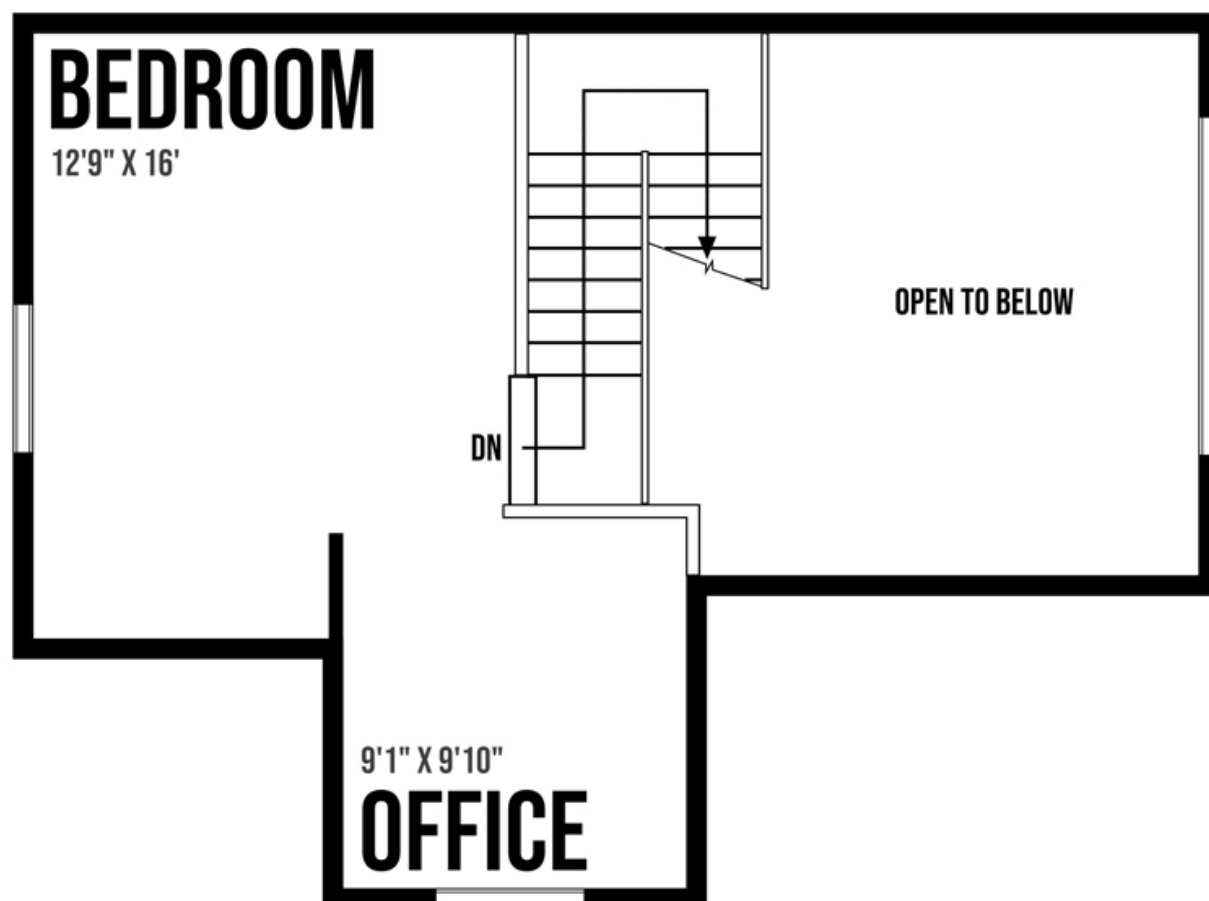
Balcony: 200 sq ft

Loft:

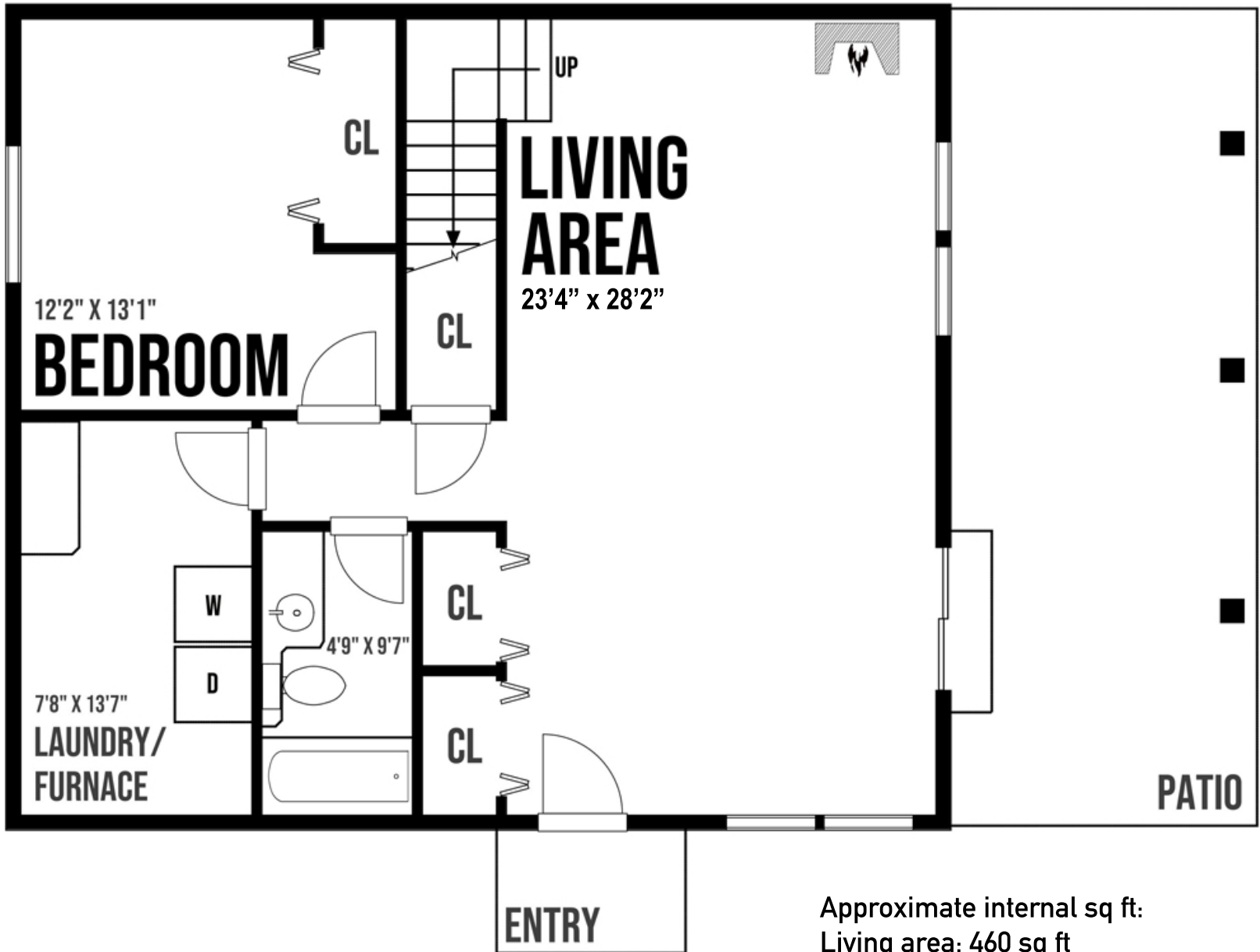
Bedroom: 200 sq ft

Office: 90 sq ft

Total internal sq ft: 1050 sq ft

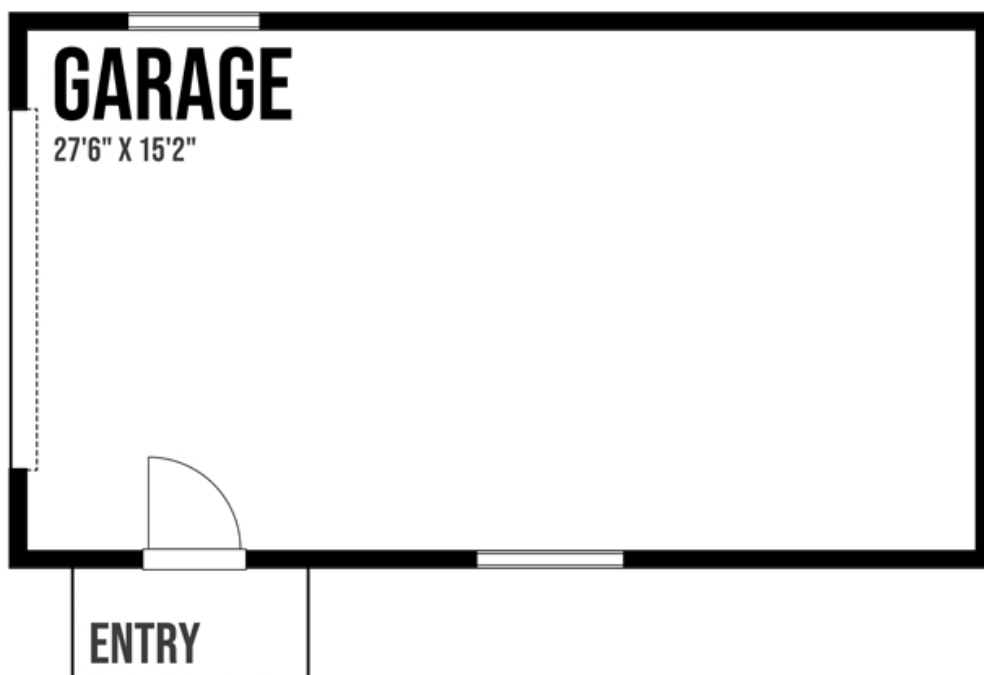


3728 Rum Rd. - Ground floor



Approximate internal sq ft:
Living area: 460 sq ft
Bedroom: 140 sq ft
Bathroom: 50 sq ft
Laundry: 110 sq ft
Patio: 310 sq ft
Total internal sq ft: 760 sq ft

Garage: 420 sq ft



Prepared for the exclusive use of Sam Boyte and Dockside Realty Ltd.
All measurements are approximate and Buyer to verify if important.

