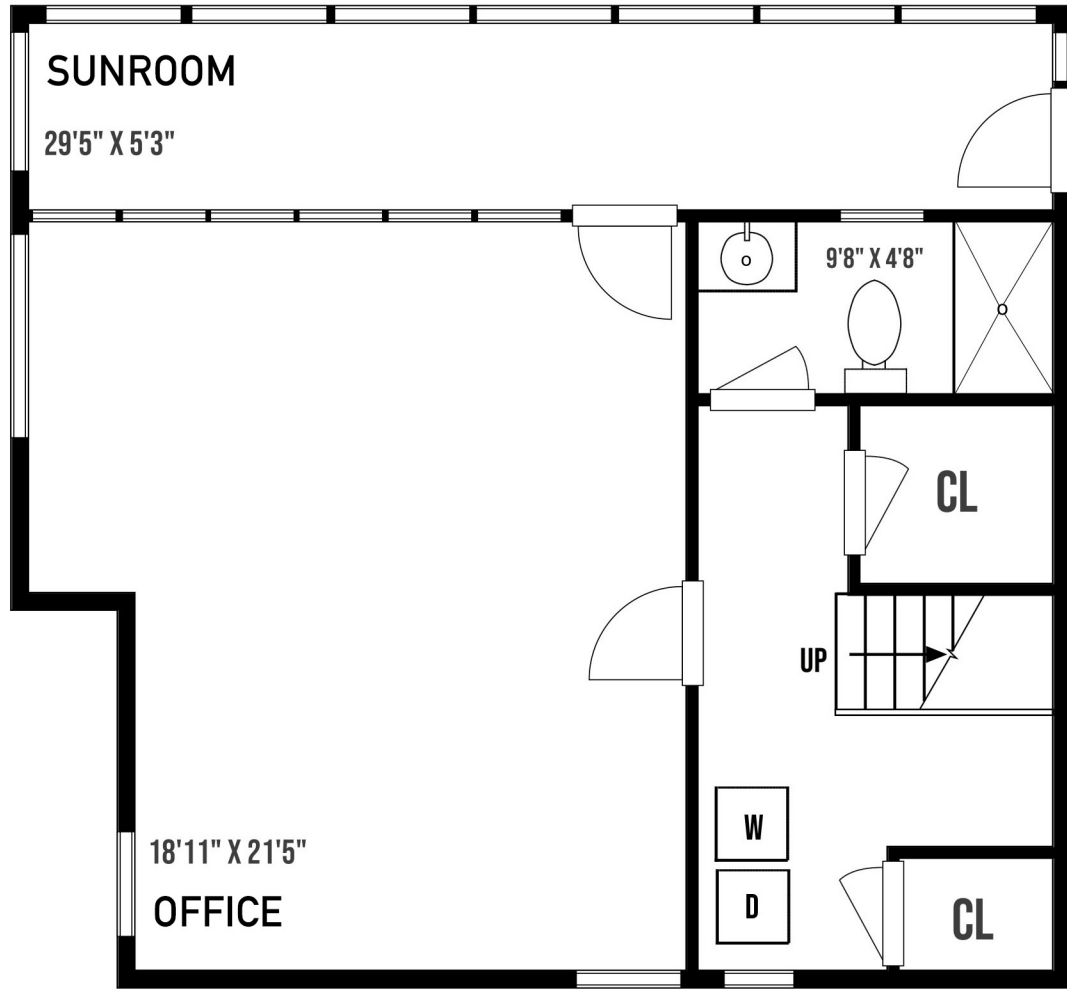
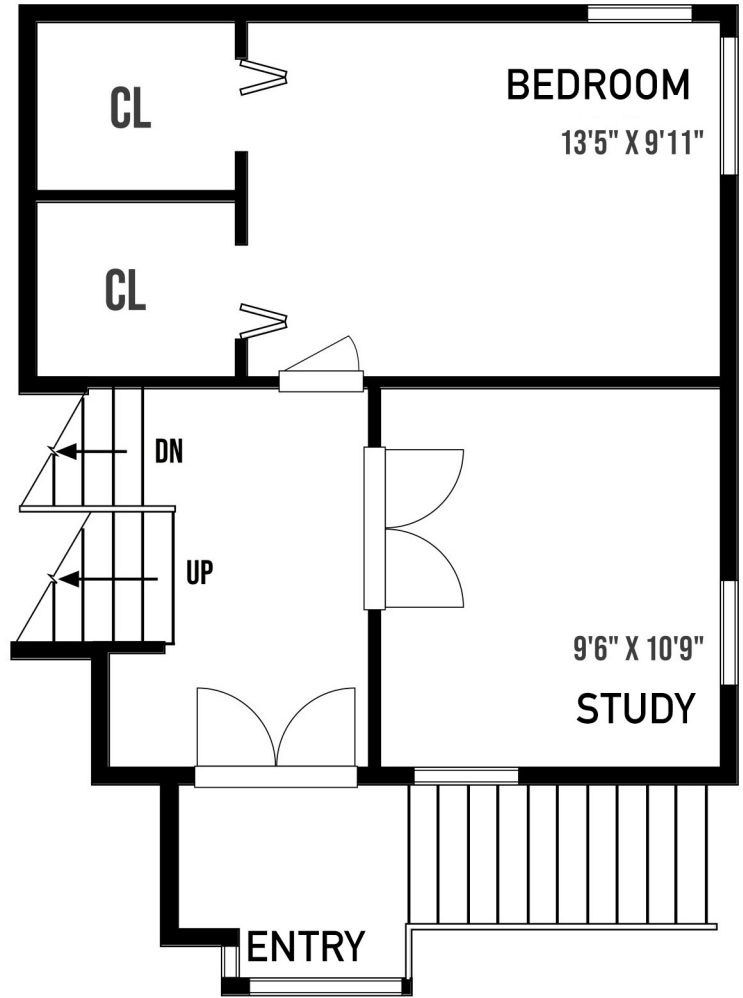


4713 Scarff Rd

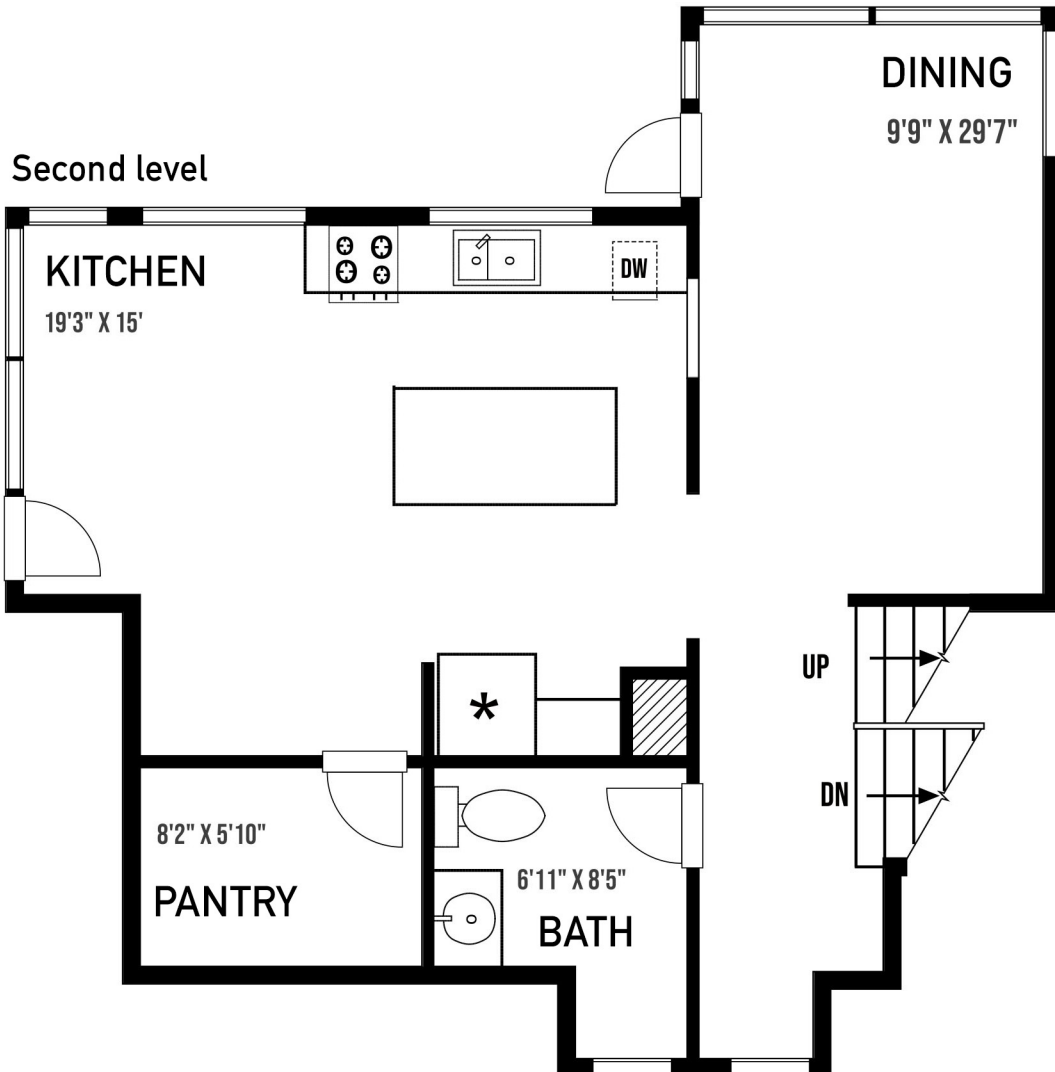
Lower level



Main level



Second level



Approximate internal sq ft:

Sunroom: 160 sq ft

Office: 380 sq ft

Lower level bathroom: 50 sq ft

Laundry/storage: 220 sq ft

Deck: 550 sq ft

Study: 110 sq ft

Bedroom: 140 sq ft

Hallway: 110 sq ft

Kitchen: 270 sq ft

Dining room: 160 sq ft

Bathroom: 50 sq ft

Pantry: 50 sq ft

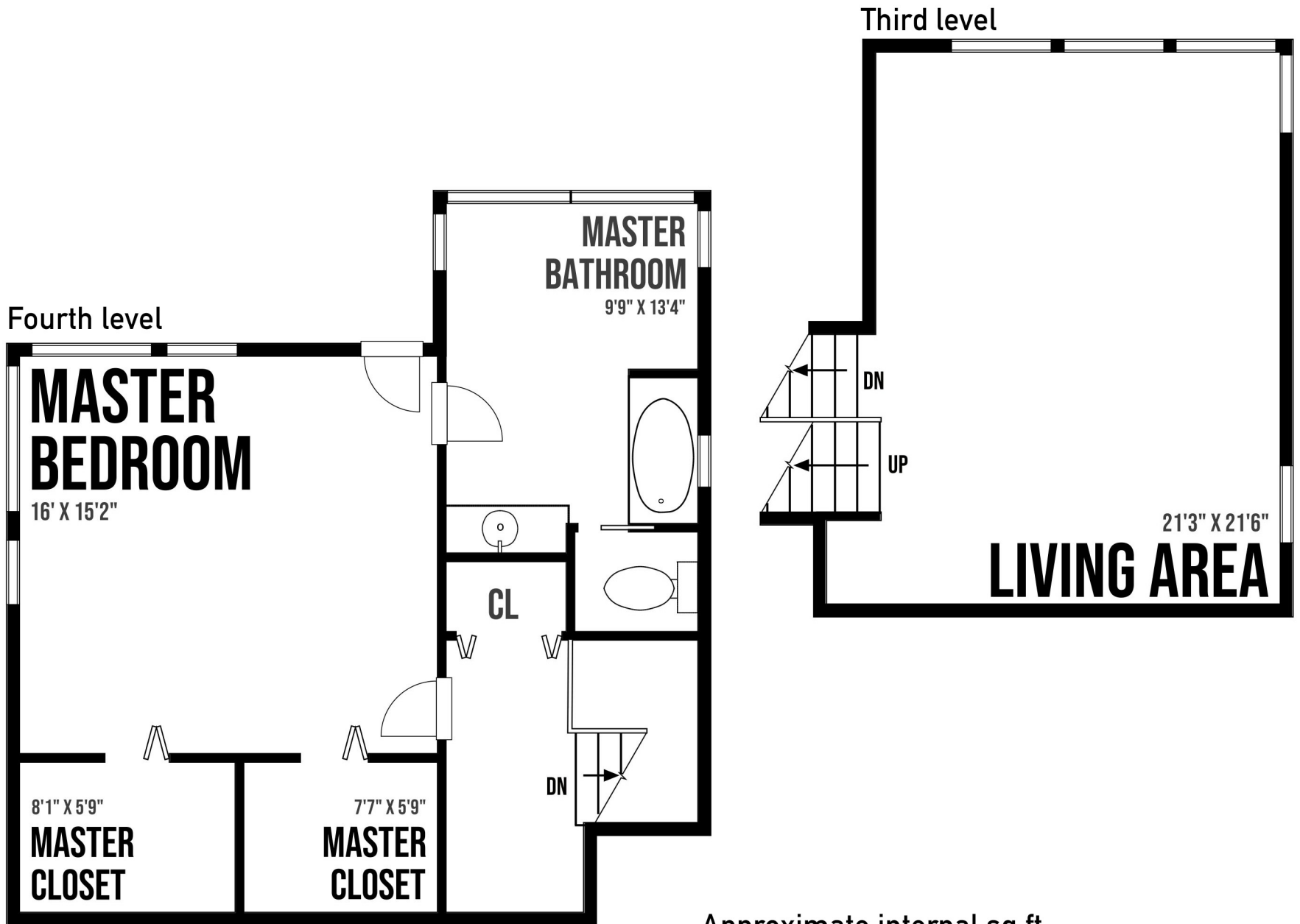
Hallways: 110 sq ft

Deck: 240 sq ft

Prepared for the exclusive use of Colin Denton and Dockside Realty Inc.
All measurements are approximate, buyer to verify if important.



4713 Scarff Rd



Approximate internal sq ft:

Living area: 280 sq ft

Master bedroom: 250 sq ft

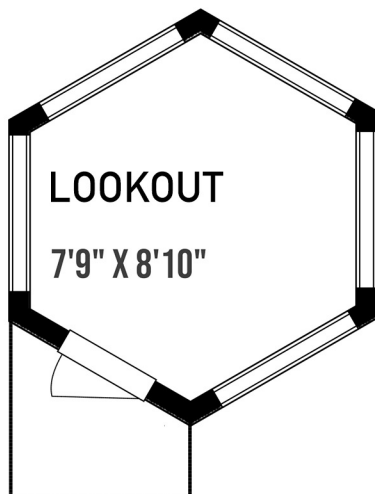
Closet: 50 sq ft

Closet: 50 sq ft

Landing: 80 sq ft

Bathroom: 140 sq ft

Lookout: 55 sq ft

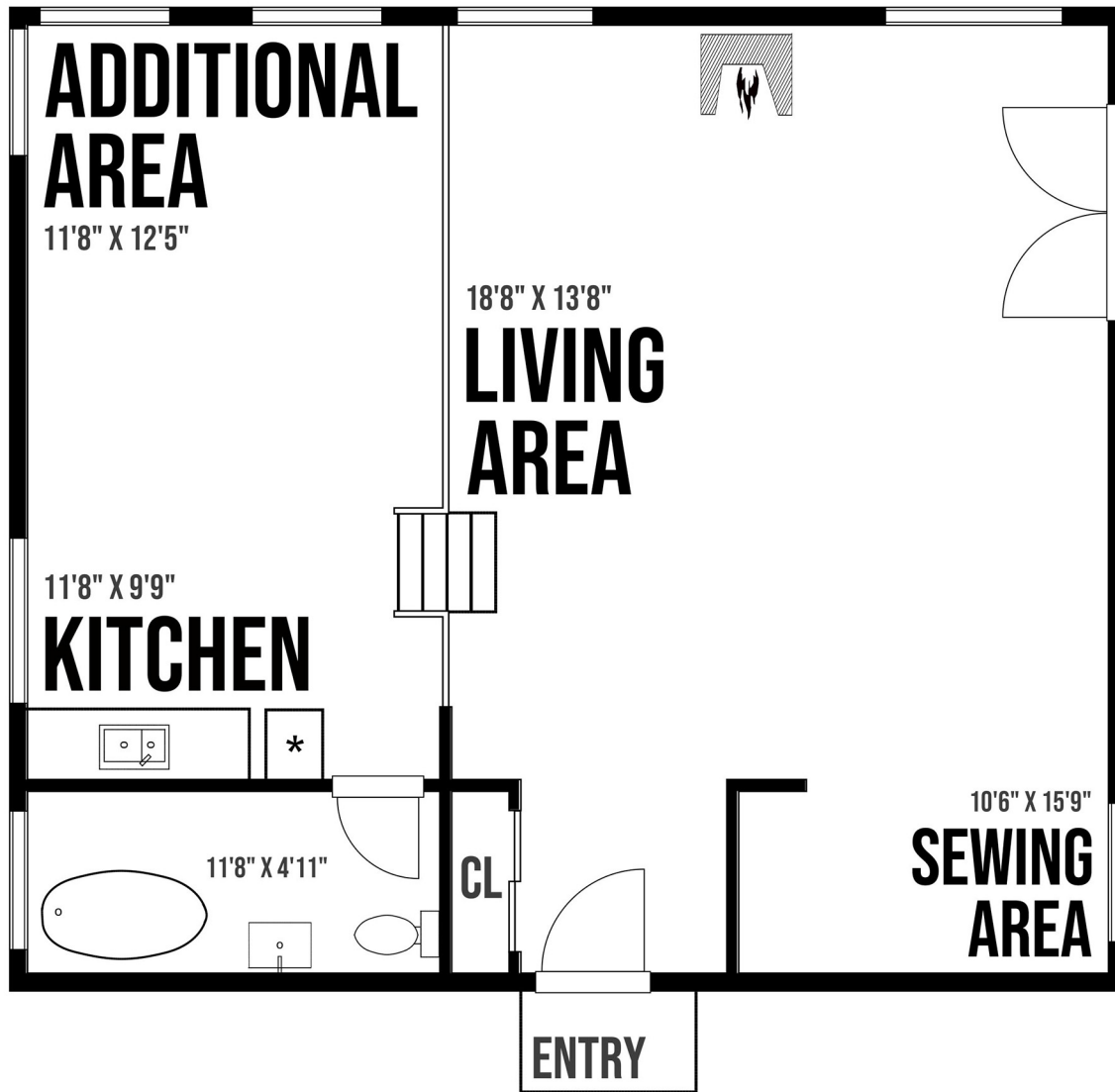


Prepared for the exclusive use of Colin Denton and Dockside Realty Inc.
All measurements are approximate, buyer to verify if important.



4713 Scarff Rd

Cabin:



Approximate internal sq ft:

Cabin:

Living area: 520 sq ft

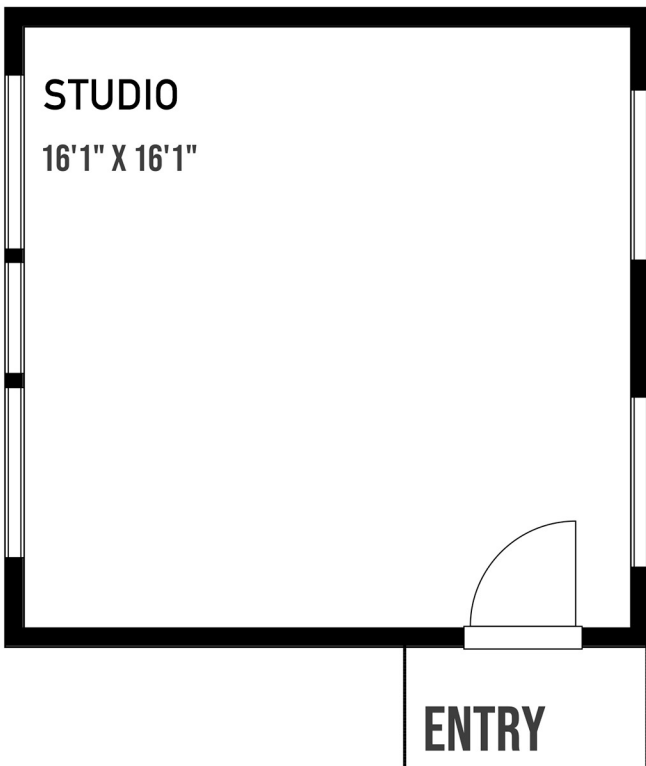
Kitchen/Dining: 265 sq ft

Bathroom: 65 sq ft

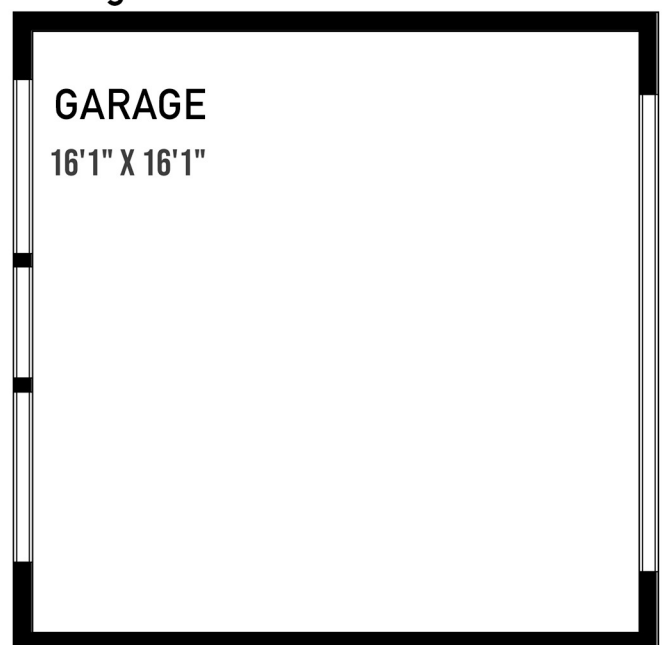
Studio: 280 sq ft

Garage: 280 sq ft

Studio:



Garage:



Prepared for the exclusive use of Colin Denton and Dockside Realty Inc.
All measurements are approximate, buyer to verify if important.

